

Banana quality defects in the field ①

(Photographs © Luc de Lapeyre, Marc Chillet, Marie-José Rives, Fruidor)

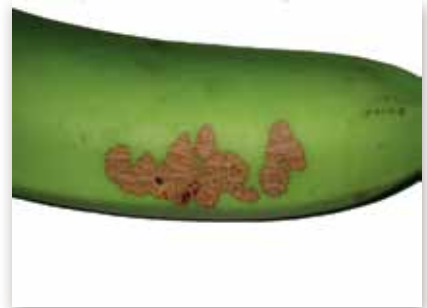
PESTS



Flower thrips



Red rust thrips



Snail damage

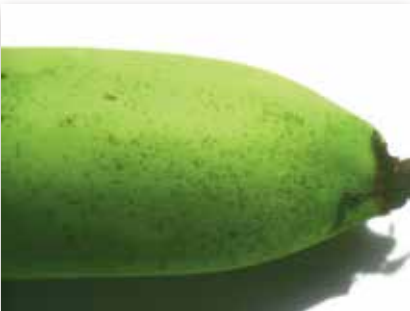


Damage by *Diaprepes* root weevil



Silver rust thrips

DISEASES



Speckling



Red speckling at ripening



Deightoniella



Sooty mould on fruit stalk



Cigar-end rot

Banana quality defects in the field ②

(Photographs © Luc de Lapeyre, Marc Chillet, Marie-José Rives, Fruidor)

PHYSIOLOGICAL DEFECTS AND OTHER IMPERFECTIONS



Double fruit and deformed fruit



Scarring by a fruit tip



Scarring by a leaf



Scarring by guying cord



Sunscald



Chemical burns

Banana quality defects at packing

(Photographs © Luc de Lapeyre, Marc Chillet, Marie-José Rives, Fruidor)

SELECTION PROBLEMS AND MISCELLANEOUS DEFECTS



Fruit too thin



Fruit too short



Latex stains



Incomplete flower removal



Flexed fruit stalks



Bruising caused by impact during packing

CHOCS

DEHANDING PROBLEMS



Crown cut too short



Pointed crown



Detached crown



Knife wound

Banana quality defects after transport

(Photographs © Luc de Lapeyre, Marc Chillet, Marie-José Rives, Fruidor)

RIPENING PROBLEMS



'Ship ripe' fruits



Unevenness after ripening

STORAGE PROBLEMS



'Green ripe' fruits



Chilling injury

STORAGE DISEASES



Latent anthracnose infection



Wound anthracnose



Crown rot



Crown rot