



EU27+UK

ANNUAL DATA

TOTAL IMPORTS
January 2021 to May 2021

332 381 t

Source: Eurostat

Comparison:

2020

+ 14%

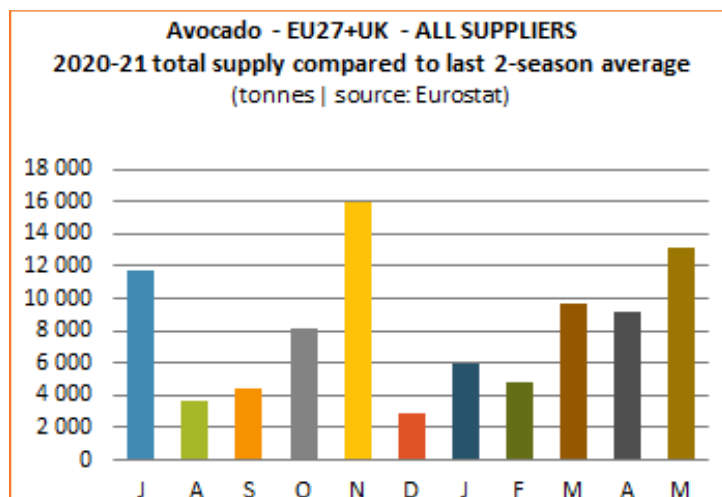
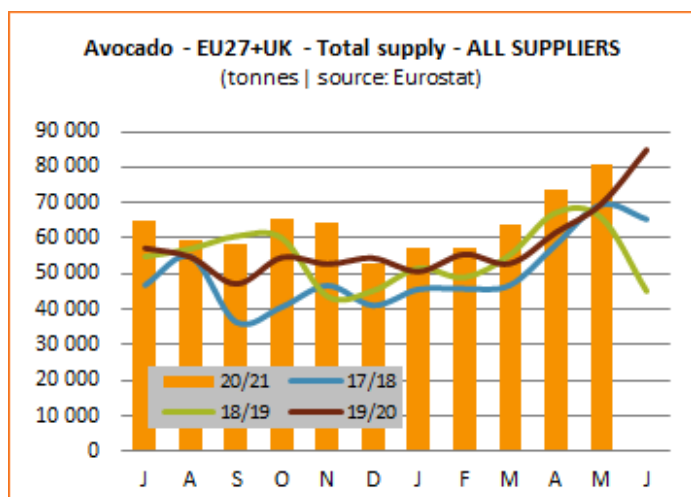
2019-20 average

+ 15%

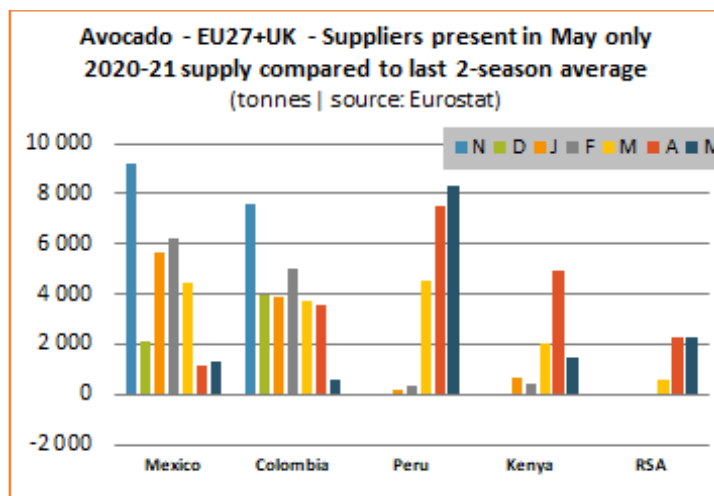
SEASON DATA

July 2020 to May 2021

Sources: Customs statistics, Eurostat



Main Suppliers present in May only			
in tonnes	Cumulative July 20 to May 21 Jan 21 to May 21*	Comparison	
		2019-20	Last 2-season aver.
Mexico	103 560	45%	74%
Colombia	84 275	70%	96%
Peru*	95 680	26 %	28%
RSA*	24 798	14%	25%
Kenya*	25 499	59%	60%





UNITED STATES

ANNUAL DATA

TOTAL IMPORTS
 January 2021 to May 2021

534 389t

Source: USDA

Comparison:

2020

+ 20%

2019-20 average

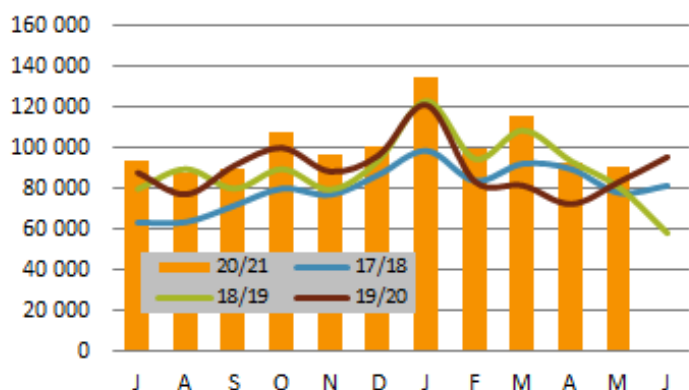
+ 13%

SEASON DATA

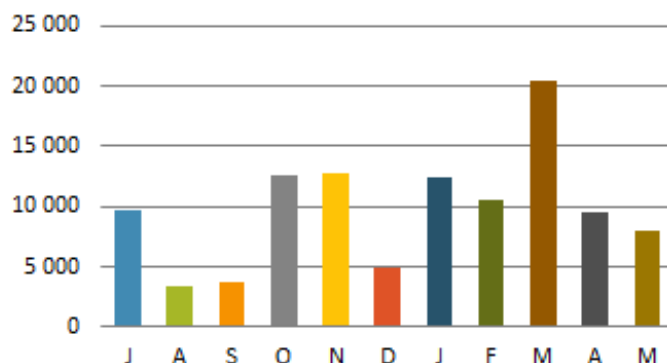
July 2020 to May 2021

Sources: Customs statistics, USDA

Avocado - USA - Total supply - ALL SUPPLIERS
 (tonnes | source: USDA)



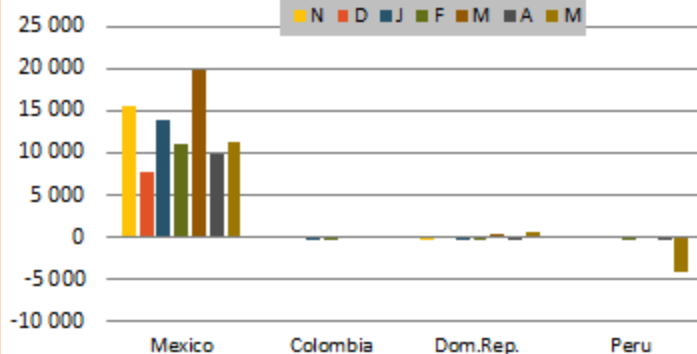
Avocado - USA - ALL SUPPLIERS
 2020-21 total supply compared to last 2-season average
 (tonnes | source: USDA)



Suppliers present in May only

in tonnes	Cumulative July20 to May21 Jan21. to May21*	Comparison	
		2019-20	Last 2-season aver.
Mexico	1 025 065	15%	15%
Dom. Rep.	29 138	12%	6%
Colombia	2 502	99 %	194%
Peru*	2 447	- 31 %	- 63%

Avocado - USA - Suppliers present in May only
 2020-21 supply compared to last 2-season average
 (tonnes | source: USDA)





JAPAN

ANNUAL DATA

TOTAL IMPORTS
January 2021 to May 2021

32 467 t

Source: Japanese Customs

Comparison:

2020

+ 11%

2019-20 average

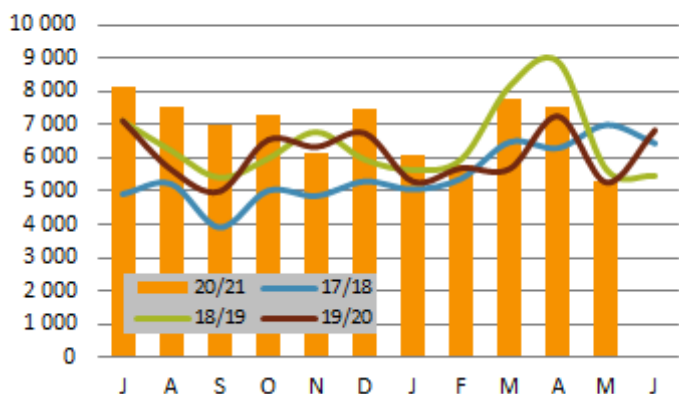
+ 2%

SEASON DATA

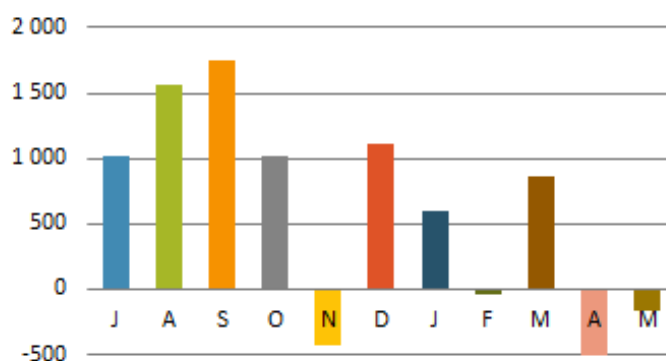
July 2020 to May 2021

Sources: Customs statistics, Japanese Customs

Avocado - JAPAN - Total supply - ALL SUPPLIERS
(tonnes | source: Japanese Customs)



Avocado - JAPAN - ALL SUPPLIERS
2020-21 total supply compared to last 2-season average
(tonnes | source: Japanese Customs)



Suppliers present in May only

in tonnes	Cumulative July 20 to May 21 *Jan 21 to May 21	Comparison	
		2019-20	Last 2-season aver.
Mexico	68 395	13 %	8%
USA	792	-55%	-41%
Peru*	286	100%	112%

Avocado - JAPAN - Suppliers present in May only
2020-21 supply compared to last 2-season average
(tonnes | source: Japanese Customs)

